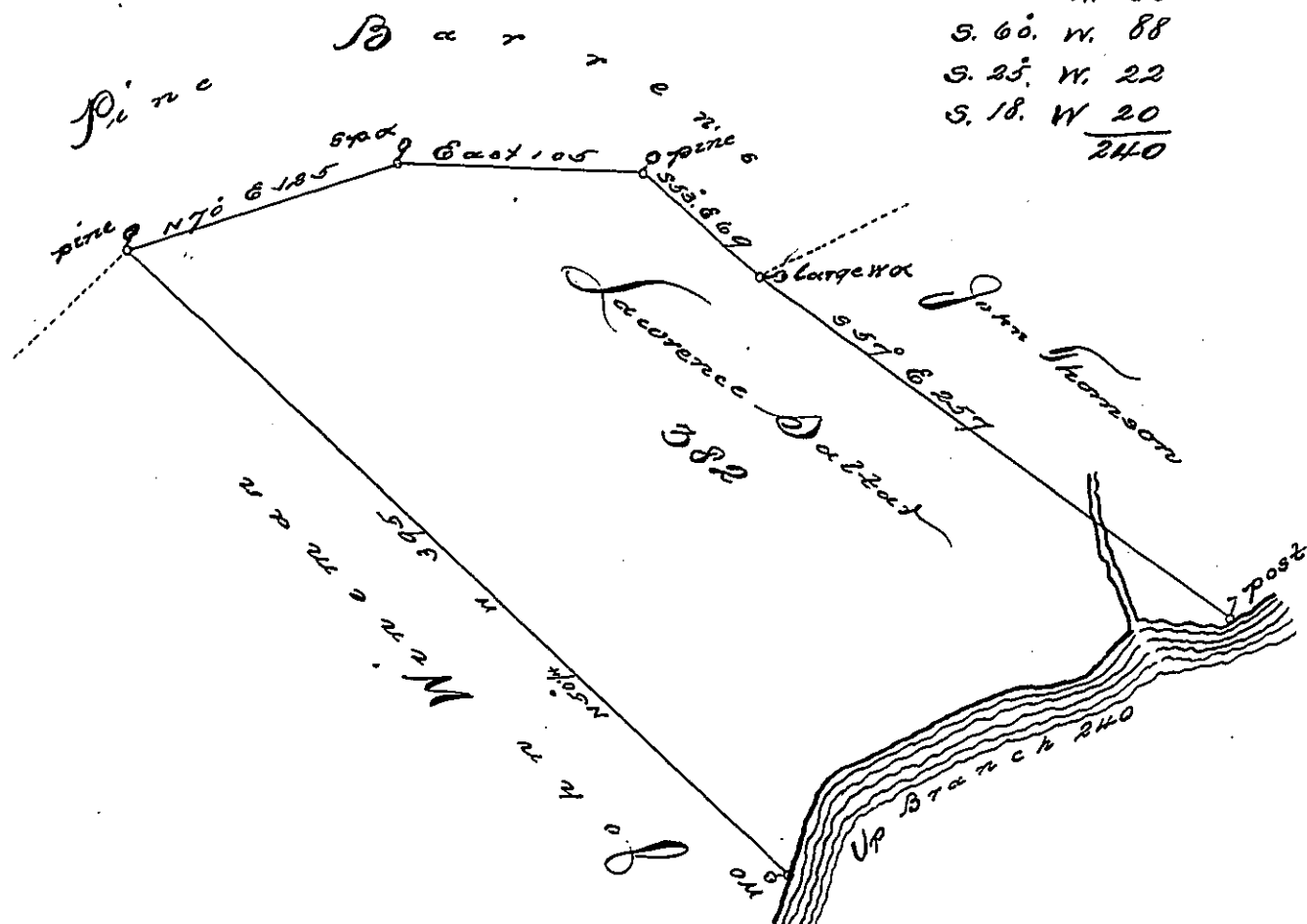


Courses & Dist. Down Branch
 from post to W^o
 West 40.
 S. 45. W. 40
 S. 85. W. 30
 S. 60. W. 88
 S. 25. W. 22
 S. 18. W. 20
 240



A Draught of a Tract of Land Wheatland situate in the forks of the East Branch of Little Juniata bounded westward by Land of John Wineman Northward by Pine Barrens & Southward by a large Branch of the said East Branch about a mile from the foot of Tussey's Mountain in Northumberland County Containing three hundred & eighty two Acres & the usual allowance of six 1/10 Cent. for roads &c. Surveyed the 28th day of May 1775 for Lawrence Sartar. by virtue of a Warrant dated the third day of April 1773. by
 Thomas Smith A.S.

To John Lukens Esq
 Surveyor General

N.B. The above Survey is at least six miles from any Man or Appropriated Proprietary Tract

IN TESTIMONY that the above is a copy of the original remaining on file in the Department of Internal Affairs of Pennsylvania, made conformably to an Act of Assembly approved the 16th day of February, 1833, I have hereunto set my Hand and caused the Seal of said Department to be affixed at Harrisburg, this third day of May, 1898

James W. Latta
 Secretary of Internal Affairs.